



In This Issue:

BERARD
SINCE
1945
The Mega Transport Experts

- > East Coast Shuffle | The Container Crane Project
- > On The Road! | The OTR Vessel Transport
- > Showtime! | See Us @ Workboat 2018
- > Berard OnTheMove Newsletter Celebrates 10 Years!

East Coast Shuffle The Container Crane Project



Job Specs

Weight: 1833 Tons

Dimensions:

491' L x 93' W x 255' H

Equipment Used:

88 axle lines of SPMTs

The Berard team headed to the northeast coast of the U.S. to transport two enormous STS container cranes. The team was commissioned to move the cranes from their current locations on the rail to a new slot, thus rearranging the order sequence.

The first crane was lifted and moved from the rail, then rotated 90 degrees so the other STS cranes could be rolled past. The crane was then transported back onto the rail into its new slot and the sequence repeated with the second crane. The project was completed on Labor Day and in only one day, giving the busy port the green light to continue operations. Congrats to all of our team for making this look like just another day at work!





OnTheRoad The OTR Vessel Transport



Job Specs

Weight:

203,000 lbs

Dimensions:

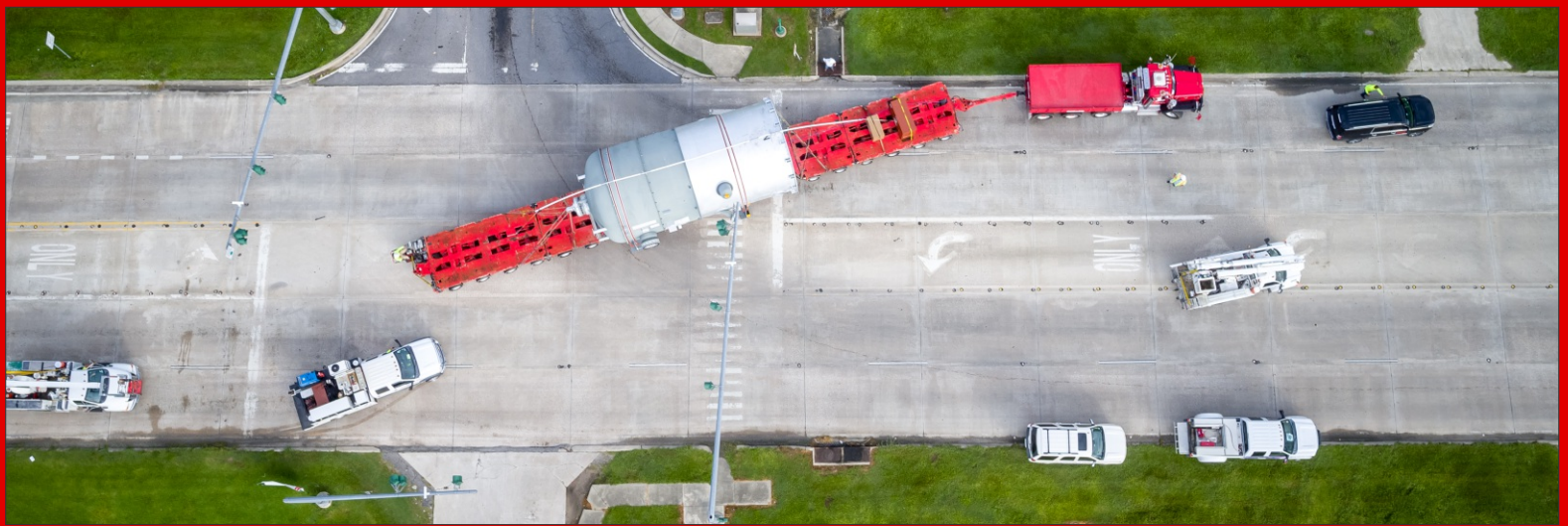
38'- 2" L x 18'-10" W x 20'-8" H

Equipment Used:

12 axle lines of Goldhofer THP/SL trailers with low-deck insert, stands, barge ramps and high volume water pumps

Berard recently transported this 203,000 lb. vessel from the Port of New Orleans, LA to a Baton Rouge, LA refinery on the Mississippi River. Far too large to ship via road directly from the port, and with not enough time to obtain all permits to roll-off of barge on the Mississippi River, Berard developed a cost effective solution using a small roll-off site approximately 30 miles from the delivery site, despite a transport height over 20 feet. Berard crews received the cargo on a deck barge directly from ship gear at the port, then barged via inland waterways to the roll-off site. Berard utilized 12 axle lines of Goldhofer THP/SL trailers with a low-deck insert to lift the vessel from stands on the barge and transport to site.





Showtime! Berard @ Workboat 2018



The Berard team will be exhibiting at The International Workboat Show in New Orleans, Louisiana in the Morial Convention Center on November 28 - 30, 2018. Come by our booth #1111 and say hello! Our sales and marketing team will be on hand to visit with everyone and showcase our awesome company. If you're in the ship building industry, come by and learn how Berard can assist your shipyard with turnkey solutions that keep your builds moving forward. Hope to see you there!

See Us @ Booth 1111



INTERNATIONAL
WORKBOAT
SHOW



Celebrating 10 Years!

OnTheMove

The Monthly Newsletter from the Berard Team

When we set out to create a newsletter, we wanted it to be something more than the typical boring type you normally find in your inbox. We wanted it not only to showcase our great company, but to be interesting and appealing. This was over ten years ago and since then OnTheMove has become one of, if not the best and most widely read newsletter in the industry.

Countless times we've heard from our subscribers both in person as well as email about how much they really enjoy our newsletters and look forward to getting each month. Hearing this makes all the hard work it takes to make this happen every month well worth it. We love what we do and we love showcasing our people, the ones who work hard to make each job a success. So here's to celebrating our 10th year and many more! Thank you all for your support of our great company and our newsletter!

Sincerely,
Tony Broussard
Marketing Director

BERARD SINCE 1945
www.berardtrans.com

OnTheMove August 08

The Mega PST, bigger, better and badder!

In This Issue:

- > The Mega PST's | A New Chapter for Berard
- > On The Road Again | The Reactor Move
- > Setting Sail | The Fast Track Launch

> The Mega PST's | A New Chapter for Berard:

Braedon & Brett Berard recently travelled to Germany, the home of Goldhofer. Berard will soon be taking delivery of Goldhofer's newest breed of transporters, the Mega PST, which has an increased weight capacity of 50 tons per axle. The Mega PST's are also narrower than its predecessor at 8' foot wide and can raise to a deck height of 6'4" and lower to 48". Berard is the first

The Mega PSTs will be totally compatible with Berard's existing Goldhofer fleet and will be an asset to our company as well as our clients projects. It's Berard going the distance for our clients by investing in the latest in heavy transport technology.

The new PSTs feature 2 free at 30" od and 16" wide with 152 psi.

Here's a comparison to our existing Goldhofer fleet.

(337)-229-6326 | Fax: (337)-229-8426 | www.berardtrans.com

August 2008 - First Issue

> Birthdays @ Berard

Happy Birthday!

Happy Birthday to These Dedicated Team Members!

Ravis Belaire
Harley Mitchell
Brianna O'Brien